

# 320 GC

HYDRAULIC EXCAVATOR



---

**Engine Power**  
**Operating Weight**

109 kW (146 hp)  
21 900 kg (48,300 lb)

Cat® C4.4 Engine meets U.S. EPA Tier 4 Final and EU Stage V emission standards with an aftertreatment system that requires no operator input or downtime.





## NEXT GENERATION EXCAVATORS

Cat® Next Generation Excavators offer you more choices than ever for your business.

- + MORE MODEL OPTIONS
- + MORE STANDARD TECHNOLOGIES
- + MORE PRICE POINTS

Ready to help you make your business stronger, Cat Next Generation Excavators give you new ways to get the most work done at the lowest cost – so you put more money in your pocket.



# THE CAT® 320 GC

RELIABLE. COMFORTABLE. PRODUCTIVE.

**THE CAT 320 GC** offers you the ideal balance of dependable performance, operator comfort and productivity benefits, and reduced costs. The Cat 320 GC is a smart choice for operations where high reliability and low-cost-per-hour performance are priorities.



## REDUCE FUEL CONSUMPTION UP TO 20%<sup>1</sup>

A precise combination of lower engine speed and a large hydraulic pump delivers top performance while burning less fuel.

## WORK SMART. SAVE MONEY.

The Cat 320 GC is equipped with Power Modes that help manage fuel consumption. Choose between two power modes to match your specific applications – Power Mode and the new Smart Mode.

Power Mode delivers maximum productivity in high-demand applications like truck loading and trenching.

Smart Mode automatically matches engine speed and hydraulic power to demand for the highest fuel efficiency in any application.

<sup>1</sup> Compared to the 320F.



## FUEL EFFICIENCY SAVINGS ADD UP

### SCENARIO:

Excavators working in a light-duty application, 1,000 hours/year

FUEL BURN PER YEAR

### THE ADVANTAGE

**400 GAL | 1514 L**  
**SAVED!**

**NEW 320 GC**  
1,600 GAL | 6056 L

**320F**  
2,000 GAL | 7570 L

### CALCULATION:

#### 320F (ECO Mode):

2.0 GAL/HR X 1,000 HR/YR = 2,000 GAL/YR

7.57 L/HR X 1000 HR/YR = 7570 L/YR

#### NEW 320 GC (Smart Mode):

(2.0 GAL/HR X 80%) X 1,000 HR/YR = 1,600 GAL/YR

(7.57 L/HR X 80%) X 1000 HR/YR = 6056 L/YR





LOWER MAINTENANCE COSTS  
**UP TO 25%**

With extended and more synchronized maintenance intervals, you get more done at a lower cost compared to the 320F. Consolidated filter locations make service faster. Hydraulic, air, and fuel tank filters have increased capacity and longer life.

**KEY MAINTENANCE COST REDUCTIONS INCLUDE:**

- + Consolidated filter locations to reduce service time.
- + Oil filters with extended maintenance intervals, plus a higher dirt capacity hydraulic filter.
- + Advanced Cat air filter with double the dust holding capacity of the previous filter.
- + Fuel filters synchronized to be changed at 1,000 hours – double the interval from the previous filters.





# CAT LINK TECHNOLOGY

## TAKES THE GUESSWORK OUT OF MANAGING YOUR EQUIPMENT



### **PRODUCT LINK™**

Product Link™ collects data automatically and accurately from your assets – any type and any brand. Information such as location, hours, fuel usage, productivity, idle time, maintenance alerts, diagnostic codes, and machine health can be viewed online through web and mobile applications.



### **VISIONLINK®**

Access information anytime, anywhere with VisionLink® – and use it to make informed decisions that boost productivity, lower costs, simplify maintenance, and improve safety and security on your jobsite. With different subscription level options, your Cat dealer can help you configure exactly what you need to connect your fleet and manage your business – without paying for extras you don't want. Subscriptions are available with cellular or satellite reporting (or both).



# CAB TAKES THE HARD OUT OF WORK

Sites where excavators typically work are rugged and challenging. That's why it's important that the 320 GC cab protects the operator as much as possible from fatigue, stresses, sounds, and temperatures of the job.



## ISO-CERTIFIED ROPS CAB

The ISO-certified ROPS cab is sound-suppressed and sealed. The windows and lower front profile of the machine give outstanding visibility to the work area without the strain of constantly leaning forward.

## ALL-AROUND VISIBILITY

Large windows at the front, sides, and rear give excellent visibility in all directions from the operator seat. The ROPS structure uses narrow front cab pillars to allow a wider field of view to the front. Plus with the standard rearview and right-hand-sideview cameras, operators will always be aware of what's surrounding the excavator.

## EASY ACCESS, CONNECTIVITY AND STORAGE

Convenience features include Bluetooth® integrated radio, USB ports for charging and phone connectivity, 12V DC outlets and AUX port, storage in rear, overhead and console compartments, and cup and bottle holders.





## TOUCHSCREEN MONITOR

Most machine settings can be controlled through the high-resolution 8-inch/203 mm touchscreen monitor. It offers 42 languages and is easy to reach from the seat – no twisting or turning to reach switches. A handy jog dial control and shortcut keys are also ergonomically positioned on the right console.

## SEAT AND CONSOLE

Efficiency of movement is critical to keeping operators productive and alert all shift long. The 320 GC seat is designed for easy operation and comfort. The new standard seat is wide and adjustable so operators of any size can work comfortably.

## CUSTOMIZABLE JOYSTICKS

Joystick function can be customized through the monitor. Joystick pattern as well as response can be set to match operator preference. All preferences are saved with the operator ID and restored at login.

## KEYLESS PUSH START

The 320 uses a keyless push-button engine start. This adds security for the machine by using Operator ID codes to limit and track machine access. Codes can be entered manually, via an optional Bluetooth key fob, or smartphone app.





# SAFETY FEATURES

## LOOK OUT FOR YOUR PEOPLE AND YOUR EQUIPMENT

Daily maintenance checks can be performed with 100% of the points accessible from ground level, making maintenance faster, easier, and safer. Checkpoints include the engine oil dipstick, fuel water separator, fuel tank water and sediment drains, and cooling system coolant level check.

### KEEP YOUR EXCAVATOR SECURE

Use your PIN code on the monitor, the optional Bluetooth key fob, or your smartphone to enable the push-button starting feature.



## STAY SAFE EVERY DAY

### FACT:

#1 cause of construction accidents: **FALLS\***

**49%** OF FALLS RESULT IN SERIOUS INJURY

**30%** OF FALLS RESULT IN DEATH

### FALLS



### NEW 320

**100%** GROUND-LEVEL MAINTENANCE HELPS PREVENT FALLS

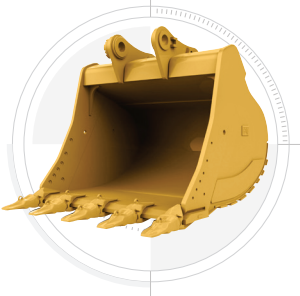
\*<https://www.ncbi.nlm.nih.gov/pmc/articles/PMC4962179/>



# INCREASE YOUR PRODUCTIVITY AND PROFIT WITH CAT ATTACHMENTS

You can easily expand the performance of your machine by utilizing any of the variety of Cat Attachments. Each Cat Attachment is designed to fit the weight and horsepower of Cat Excavators for improved performance, safety and stability.

## BUCKETS



## GRAPPLES



## HYDRAULIC HAMMERS



## PREVENT HAMMER WEAR AND TEAR

Turn on through the monitor and the hammer will automatically stop after 30 seconds of continuous firing, preventing both tool and excavator from overworking.

## MULTI-PROCESSORS



## QUICK COUPLERS



## RIPPERS



## VIBRATORY PLATE COMPACTORS



## ATTACHMENT TRACKING MADE EASY

The Cat PL161 Attachment Locator is a Bluetooth device that makes finding your attachments and other gear quick and easy. The Cat App on your phone will locate the device automatically.





# TECHNICAL SPECIFICATIONS

See [cat.com](http://cat.com) for complete specifications.

| ENGINE                                                                                                                                                                                                                                             |                           |
|----------------------------------------------------------------------------------------------------------------------------------------------------------------------------------------------------------------------------------------------------|---------------------------|
| Engine Model                                                                                                                                                                                                                                       | Cat C4.4                  |
| Engine Power – ISO 9249                                                                                                                                                                                                                            | 110 kW 148 hp             |
| Net Power – ISO 14396                                                                                                                                                                                                                              | 109 kW 146 hp             |
| Bore                                                                                                                                                                                                                                               | 105 mm 4 in               |
| Stroke                                                                                                                                                                                                                                             | 127 mm 5 in               |
| Displacement                                                                                                                                                                                                                                       | 4.4 L 269 in <sup>3</sup> |
| Net Power is tested per ISO 9249. Standards in effect at the time of manufacture.                                                                                                                                                                  |                           |
| Net power advertised is the power available at the flywheel when the engine is equipped with fan, air intake system, exhaust system and alternator.                                                                                                |                           |
| Rated speed at 2,000 rpm.                                                                                                                                                                                                                          |                           |
| HYDRAULIC SYSTEM                                                                                                                                                                                                                                   |                           |
| Main System – Maximum Flow (Implement)                                                                                                                                                                                                             | 442 L/min 116 gal/min     |
| Maximum Pressure – Equipment                                                                                                                                                                                                                       | 35 000 kPa 5,075 psi      |
| Maximum Pressure – Travel                                                                                                                                                                                                                          | 34 300 kPa 4,974 psi      |
| Maximum Pressure – Swing                                                                                                                                                                                                                           | 25 000 kPa 3,625 psi      |
| SWING MECHANISM                                                                                                                                                                                                                                    |                           |
| Swing Speed                                                                                                                                                                                                                                        | 11.6 rpm                  |
| Maximum Swing Torque                                                                                                                                                                                                                               | 74 kN·m 54,900 lb-ft      |
| MACHINE WEIGHT                                                                                                                                                                                                                                     |                           |
| Operating Weight                                                                                                                                                                                                                                   | 21 900 kg 48,300 lb       |
| 5.7 m (18'8") reach boom, 2.9 m (9'6") reach stick, 1.0 m <sup>3</sup> (1.31 yd <sup>3</sup> ) GD bucket, 700 mm (28") triple grouser shoes.                                                                                                       |                           |
| SERVICE REFILL CAPACITIES                                                                                                                                                                                                                          |                           |
| Fuel Tank                                                                                                                                                                                                                                          | 345 L 86.6 gal            |
| Cooling System                                                                                                                                                                                                                                     | 25 L 6.6 gal              |
| Engine Oil                                                                                                                                                                                                                                         | 15 L 4.0 gal              |
| Swing Drive (each)                                                                                                                                                                                                                                 | 12 L 3.2 gal              |
| Final Drive (each)                                                                                                                                                                                                                                 | 5 L 1.3 gal               |
| Hydraulic System (including tank)                                                                                                                                                                                                                  | 234 L 61.8 gal            |
| Hydraulic Tank                                                                                                                                                                                                                                     | 115 L 30.4 gal            |
| DEF Tank                                                                                                                                                                                                                                           | 39 L 10.3 gal             |
| AIR CONDITIONING SYSTEM                                                                                                                                                                                                                            |                           |
| The air conditioning system on this machine contains the fluorinated greenhouse gas refrigerant R134a (Global Warming Potential = 1430). The system contains 0.9 kg of refrigerant, which has a CO <sub>2</sub> equivalent of 1.287 metric tonnes. |                           |

| DIMENSIONS                                        |                                                |
|---------------------------------------------------|------------------------------------------------|
| <b>Boom</b>                                       | <b>Reach 5.7 m (18'8")</b>                     |
| <b>Stick</b>                                      | <b>Reach 2.9 m (9'6")</b>                      |
| <b>Bucket</b>                                     | <b>1.0 m<sup>3</sup> (1.31 yd<sup>3</sup>)</b> |
| Shipping Height (top of cab)                      | 2960 mm 9'9"                                   |
| Handrail Height                                   | 2950 mm 9'8"                                   |
| Shipping Length                                   | 9530 mm 31'3"                                  |
| Tail Swing Radius                                 | 2830 mm 9'3"                                   |
| Track Length                                      | 4450 mm 14'7"                                  |
| Length to Center of Rollers                       | 3650 mm 12'0"                                  |
| Ground Clearance                                  | 470 mm 1'7"                                    |
| Track Gauge                                       | 2380 mm 7'9"                                   |
| Transport Width – 790 mm (31") Shoes              | 3170 mm 10'5"                                  |
| Transport Width – 700 mm (28") Shoes              | 3080 mm 10'1"                                  |
| Counterweight Clearance                           | 1050 mm 3'5"                                   |
| WORKING RANGES AND FORCES                         |                                                |
| <b>Boom</b>                                       | <b>Reach 5.7 m (18'8")</b>                     |
| <b>Stick</b>                                      | <b>Reach 2.9 m (9'6")</b>                      |
| <b>Bucket</b>                                     | <b>1.0 m<sup>3</sup> (1.31 yd<sup>3</sup>)</b> |
| Maximum Digging Depth                             | 6720 mm 22'1"                                  |
| Maximum Reach at Ground Level                     | 9860 mm 32'4"                                  |
| Maximum Cutting Height                            | 9450 mm 31'0"                                  |
| Maximum Loading Height                            | 6490 mm 21'4"                                  |
| Minimum Loading Height                            | 2170 mm 7'1"                                   |
| Maximum Depth Cut for 2440 mm (8'0") Level Bottom | 6550 mm 21'6"                                  |
| Maximum Vertical Wall Digging Depth               | 5690 mm 18'8"                                  |
| Bucket Digging Force (ISO)                        | 129 kN 28,935 lbf                              |
| Stick Digging Force (ISO)                         | 99 kN 22,281 lbf                               |



# STANDARD & OPTIONAL EQUIPMENT

Standard and optional equipment may vary. Consult your Cat dealer for details.

| 320 CAB                                                  | STANDARD       | OPTIONAL       |
|----------------------------------------------------------|----------------|----------------|
| ROPS, standard sound suppression                         | •              |                |
| Mechanically adjustable seat                             | •              |                |
| High-resolution 203 mm (8 inch) LCD touchscreen monitor  | •              |                |
| CAT TECHNOLOGY                                           | STANDARD       | OPTIONAL       |
| Cat Product Link                                         | •              |                |
| Auto hammer stop                                         | •              |                |
| ENGINE                                                   | STANDARD       | OPTIONAL       |
| Two selectable power modes                               | •              |                |
| Auto engine speed control                                | •              |                |
| Auto engine idle shutdown                                | •              |                |
| 52° C (125° F) high-ambient cooling capacity             | •              |                |
| -32° C (-25° F) cold start capability                    | •              |                |
| Double element air filter with integrated precleaner     | •              |                |
| Reversing electric cooling fans                          | •              |                |
| Biodiesel capability up to B20                           | •              |                |
| HYDRAULIC SYSTEM                                         | STANDARD       | OPTIONAL       |
| Boom and stick regeneration circuits                     | •              |                |
| Boom and stick lowering check valves                     | • <sup>1</sup> | •              |
| Auto warm up                                             | •              |                |
| Auto two-speed travel                                    | •              |                |
| Boom and stick drift reduction valve                     | •              |                |
| Slider Joysticks                                         | • <sup>1</sup> | •              |
| Tool Control (two pumps, one/two way high-pressure flow) | • <sup>1</sup> | •              |
| Medium-pressure circuit                                  |                | • <sup>1</sup> |
| Quick coupler circuit for Cat Pin Grabber                | •              |                |

<sup>1</sup> Europe only

<sup>2</sup> North America only

| BOOM AND STICK                                                  | STANDARD       | OPTIONAL       |
|-----------------------------------------------------------------|----------------|----------------|
| 5.7 m (18'8") reach boom, 2.9 m (9'6") stick                    | •              |                |
| 5.7 m (18'8") reach boom, 2.5 m (8'2") stick                    |                | • <sup>1</sup> |
| UNDERCARRIAGE AND STRUCTURES                                    | STANDARD       | OPTIONAL       |
| 600 mm (24") triple grouser shoes                               |                | • <sup>1</sup> |
| 700 mm (28") triple grouser shoes                               |                | • <sup>1</sup> |
| 790 mm (31") triple grouser shoes                               | • <sup>2</sup> | •              |
| Tie-down points on base frame                                   | •              |                |
| 4200 kg (9,300 lb) counterweight                                | •              |                |
| ELECTRICAL SYSTEM                                               | STANDARD       | OPTIONAL       |
| Two 1,000 CCA maintenance-free batteries                        | •              |                |
| Programmable time-delay LED working lights                      | •              |                |
| LED chassis light, left-hand/right-hand boom lights, cab lights | •              |                |
| SERVICE AND MAINTENANCE                                         | STANDARD       | OPTIONAL       |
| Scheduled Oil Sampling (S-O-S <sup>SM</sup> ) ports             | •              |                |
| Ground-level and platform-level engine oil dipsticks            | •              |                |
| SAFETY AND SECURITY                                             | STANDARD       | OPTIONAL       |
| Rearview and right-hand-sideview cameras                        | •              |                |
| Ground-level engine shutoff switch                              | •              |                |
| Right-hand handrail and hand hold                               | •              |                |
| Signaling/warning horn                                          | •              |                |

**Not all features are available in all regions. Please check with your local Cat dealer for specific offering availability in your area.**

For additional information, refer to the Technical Specifications brochures for the 320 GC, 320 and 323 models available at [www.cat.com](http://www.cat.com) or your Cat dealer.



For more complete information on Cat products, dealer services and industry solutions, visit us on the web at [www.cat.com](http://www.cat.com)

© 2020 Caterpillar. All Rights Reserved.

VisionLink is a trademark of Trimble Navigation Limited, registered in the United States and in other countries.

Materials and specifications are subject to change without notice. Featured machines in photos may include additional equipment. See your Cat dealer for available options.

CAT, CATERPILLAR, LET'S DO THE WORK, their respective logos, "Caterpillar Corporate Yellow", the "Power Edge" and Cat "Modern Hex" trade dress as well as corporate and product identity used herein, are trademarks of Caterpillar and may not be used without permission.  
[www.cat.com](http://www.cat.com) [www.caterpillar.com](http://www.caterpillar.com)

AEXQ2330-05  
Replaces AEXQ2330-04  
Build Number: 07D

